

# OPTIMUM

ENGINEERING LIMITED - Diamond Services & Equipment

## NEW SCAIVE TECHNOLOGY FOR ALL TYPES OF FLAT SCAIVES

Cast Iron All Grades - Diamond Impregnated - Super HSS Turbo

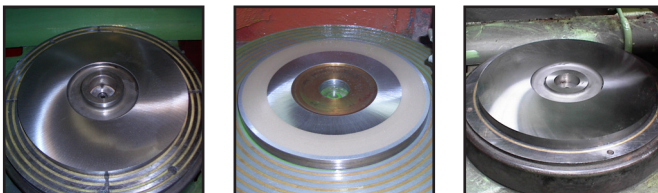


The OPTIMUM grinding machine has been especially developed for the re conditioning of Scaives for the Diamond Polishing Industry.

The machine will handle all types of FLAT Scaives, Indian HSS Turbo, Belgian Diamond Impregnated Scaives for Blocking machines and traditional Cast Iron Scaives of all grades. Tang plates can also be processed on the machine.

This unique process will achieve super engineering tolerance of down to 0,002mm (2 microns).

The flatness, parallelism, balance and runout of the Scaive is reduced to such a level that the geometry and symmetry of polished goods meet all international grading standards.



Cast Iron

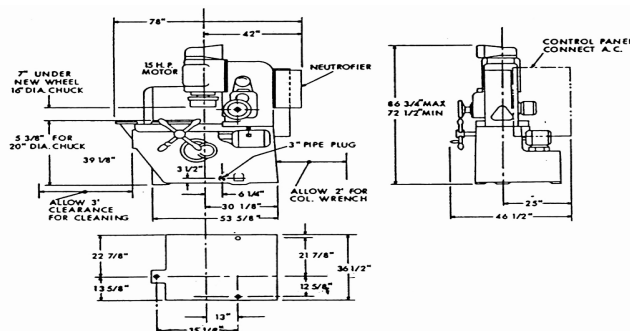
Diamond Impregnated

HSS Turbo

The process is consistently superior to tradition methods and the following benefits are achieved :

- Quick Cycle Times
- Cheap Economic Process
- Existing Staff Trained
- No Lapping Required

### SPECIFICATION



GRINDING CAPACITY	20 INCH DIAMETER
SIZE OF GRINDING WHEEL	11 INCH DIAMETER
SPEED RANGE	200-1500 RPM
GRINDING INCREMENTS	0.0005 INCH
MOTOR HORSE POWER	15 HP
OVERALL HEIGHT	86 INCHES
OVERALL WIDTH	78 INCHES
OVERALL DEPTH	46.5 INCHES
WEIGHT	6400 LBS

## OPTIMUM ENGINEERING LIMITED

1 Highbarns / Hemel Hempstead / Hertfordshire / HP3 8AQ  
TEL / 01442 232 632 FAX / 01442 232 633  
EMAIL / sales@oeluk.com www.oeluk.com